

## Reasons for Breast Augmentation

Improving your shape with plastic surgery can improve self confidence and change how you are perceived by others. Breast surgery, however, does not completely change who you are and may not meet all of your expectations.

Women seek breast surgery for a number of reasons:

- Being genetically disposed to smaller breasts.
- Being genetically disposed to breasts that are not symmetrical, with one breast having a different size or shape than the other.
- Breast cancer patients often seek breast reconstruction surgery because a breast is partially or totally removed as part of the cancer treatment.
- Reduced firmness from aging.
- Drooping or sagging breasts after child bearing and breast feeding (this condition requires two procedures: breast lift and breast augmentation).

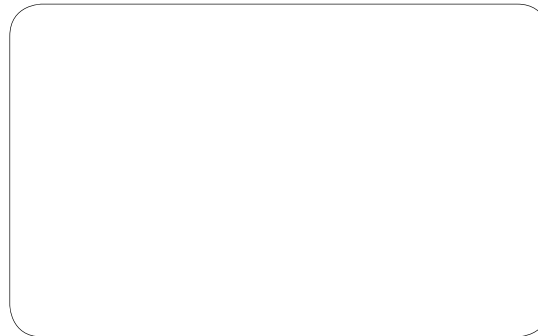
Breast augmentation surgery can enhance size and shape, correct imbalances, improve firmness, and restore the body contour for these patients.

The best candidates for breast enlargement are women who are emotionally well-adjusted and who have a thorough understanding of the procedure. They are in good health, have a history of physical activity, and eat a healthy diet.

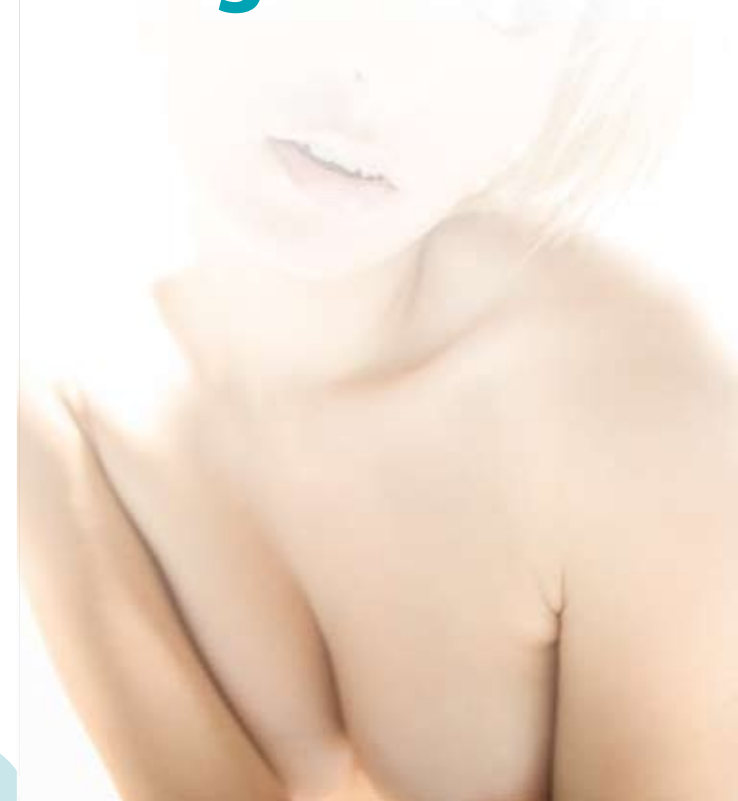
Breast surgery is a good choice to enhance your figure, but not to completely change it. Understanding the procedure will help you form realistic expectations.



Hair Regrowth & Cosmetic Medicine



# All you needed to know about Breast Augmentation



## Bioscor International Worldwide

A More Beautiful You no matter where you are, with offices and clinics around the globe.



For all location details check [www.bioscor.com.au](http://www.bioscor.com.au).

# What You Need to Know About Breast Augmentation



Today, women are choosing breast augmentation to enhance their profile and improve the appearance of breasts that show signs of aging or changes after child bearing.

Breast augmentation is one of the most common procedures in cosmetic plastic surgery.

## Basics of Breast Augmentation

Breast augmentation is performed by inserting a breast implant behind breast tissue or above the breast muscle. Implants come in a variety of shapes and sizes, with varying designs, in a range of materials. They can be placed in different positions through a variety of incision locations.

Breast surgery is a medical procedure that requires advanced surgical skill. The goal is to leave your breasts looking as natural as possible, while enlarging them to your desired size.

## Breast Lift with Breast Augmentation

The plastic surgeon may recommend that a breast lift and breast augmentation be performed at the same time. This is most commonly recommended to treat the sagging appearance that results from aging or pregnancy. During this combined procedure, some breast tissue is removed, the breast skin is tightened and lifted and an implant is inserted.

Another, newer technique to provide a breast lift and breast augmentation is laser bra breast surgery. In this technique, a laser is used to provide more support for the breast.

## Initial Consultation

During the initial consultation, the surgeon will discuss your goals and expectations, the size and shape you are looking for and your feelings about the procedure.

You and your Bioscor Doctor should make decisions together about the type of implant, the incision location and the implant placement. Your anatomy plays a major role

in these decisions. The Bioscor Doctor will discuss with you about the options for surgery — depending on your current measurements, your body frame and your expectations.

Patients can choose the type of breast implants. Implant factors include the implant size, shape, and material, in addition to whether or not the implant volume can be adjusted after surgery, all of which should be discussed beforehand.

## After Surgery



Because breast tissue is stretched and separated, and because implants are inserted through incisions, the breasts will be bruised, sore, and swollen after surgery. You can expect to wear a surgical bra for several

days. There may be some moderate pain, but that can be treated by a prescription from your plastic surgeon. Your doctor may suggest that you wear an athletic or support bra until the swelling has subsided.

Heavy lifting or straining should be avoided after surgery because this can cause the breasts to swell and increase pressure. You can typically return to work within a week and to full activity within a few weeks. Sensation in your nipples may be reduced temporarily, but should return to normal as your breasts heal. Breast feeding usually is not hindered; however, it is important to ask the doctor about breast feeding during your initial consultation.

After healing, some permanent scarring will remain. Scars are typically small and inconspicuous. Your surgeon's goal will be to make them as unnoticeable as possible. Inframammary and periareolar incision scars are on the breast. Transaxillary or TUBA incisions can be placed in a natural fold in the skin under the armpit, virtually unnoticeable after surgery.

As with any surgery, there is risk of complications related to infection or reaction to local anesthesia. Excessive bleeding may also occur. With proper precautions by the surgical team, complications are typically minimized or prevented. Risk can be further reduced by fully informing your doctor about your medical history prior to surgery and by carefully following pre- and postoperative instructions.

## Breast Augmentation at Bioscor

At Bioscor we specialise in breast augmentation via transaxillary incision, an incision placed in the natural folds of the skin in the armpit.

The breast comprises a complex group of tissues, including glandular, fatty, and fibrous tissues. The breast is positioned over the pectoral muscles of the chest wall and is attached to the chest wall by fibrous strands called Cooper's ligaments.

The breast extends as high as the collarbone, as far in the middle of the chest area as the breastbone, and as far toward to outside of the chest area as the armpit. When lying down, the armpit is immediately below the breast.

## How is the Transaxillary Incision Performed?

To perform the transaxillary incision, the incision is made in the natural folds of the armpit tissue, then a channel is created up to the breast. This procedure is sometimes performed with an endoscope, or a small tube with a surgical light and camera embedded in the end, to provide visibility through the channel. The implant is inserted and moved through the channel, then positioned and centered behind the nipple.

## Advantages of the Transaxillary Incision

The biggest advantage with the transaxillary incision is that the scar is not on the breast.

## Alternative Methods

Other methods of breast augmentation include

- Under the breast (inframammary incision)
- Around the nipple (periareolar incision)
- In the navel area (transumbilical or TUBA incision).

## Consult Your Bioscor Doctor

Each individual's situation is unique, so be sure to discuss your options with a Bioscor doctor to see which method is suitable for you.